

# Crude Drug Test Standard

A. Standards for general test on The Japanese Pharmacopoeia p2-3

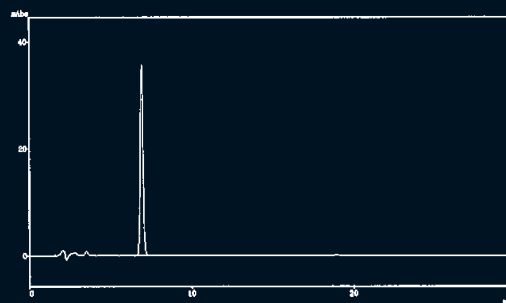
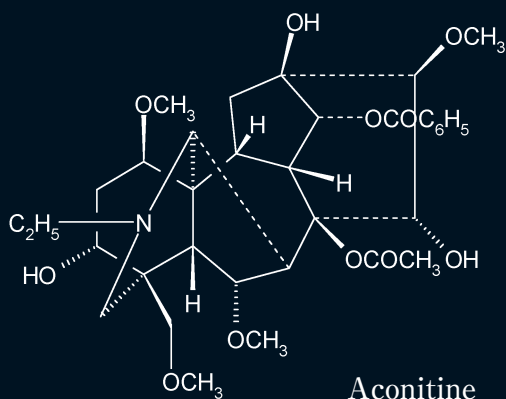
B. Standards for crude drug research test p3-6

## Features

- Extracted from natural ingredient
- High purity; over 98%



Aconitum japonicum



PKNO	TIME	AREA	HEIGHT	MK	IDNO	CONC	NAME
1	6.893	438661	35090			100.0000	
		438661	35090			100.0000	

## A ; Standards for general test on The Japanese Pharmacopoeia

Product name	CAS No.	Molecular formula, MW	Product No.	Size	Grade <sup>*</sup>	Crude drug
Aconitium Diester Alkaloids Standard	—	—	012-20581	0.35mg	PT	Processed Aconite Root
Alisol A	19885-10-0	C <sub>30</sub> H <sub>50</sub> O <sub>5</sub> =490.72	018-20681	20mg	TLC	Alisma Rhizome
Arbutin	497-76-7	C <sub>12</sub> H <sub>16</sub> O <sub>7</sub> ·nH <sub>2</sub> O (C <sub>12</sub> H <sub>16</sub> O <sub>7</sub> =272.25)	011-20291	20mg	ICD & TLC	Bearberry Leaf
Astragaloside IV	84687-43-4	C <sub>41</sub> H <sub>68</sub> O <sub>14</sub> =784.97	015-20691	20mg	TLC	Astragalus Root
Barbaloin	1415-73-2	C <sub>21</sub> H <sub>22</sub> O <sub>5</sub> =418.39	028-15231	10mg	ICD & TLC	Aloe
Benzoylmesaconine Hydrochloride	126266-38-4	C <sub>31</sub> H <sub>43</sub> NO <sub>10</sub> ·HCl·xH <sub>2</sub> O (C <sub>31</sub> H <sub>43</sub> NO <sub>10</sub> ·HCl = 626.13)	022-15491	5mg	TLC	Processed Aconite Root
Bufalin	465-21-4	C <sub>24</sub> H <sub>34</sub> O <sub>4</sub> ·xH <sub>2</sub> O (C <sub>24</sub> H <sub>34</sub> O <sub>4</sub> =386.53)	025-15241	20mg	ICD	Toad Venom
Cinobufagin	470-37-1	C <sub>26</sub> H <sub>34</sub> O <sub>6</sub> ·nH <sub>2</sub> O (C <sub>26</sub> H <sub>34</sub> O <sub>6</sub> =442.55)	030-19491	20mg	ICD	Toad Venom
Geniposide	24512-63-8	C <sub>17</sub> H <sub>24</sub> O <sub>10</sub> =388.37	071-05071	20mg	ICD & TLC	Gradenia Fruit
Gentiopicroside	20831-76-9	C <sub>16</sub> H <sub>20</sub> O <sub>9</sub> =356.32	073-05031	10mg	TLC	Gentian
[6]-Gingerol	23513-14-6	C <sub>17</sub> H <sub>26</sub> O <sub>4</sub> =294.39	074-05061	20mg	TLC	Ginger
Ginsenoside Rg1	22427-39-0	C <sub>42</sub> H <sub>72</sub> O <sub>14</sub> =801.01	076-05021	10mg	TLC	Panax Ginseng
Glycyrrhizic Acid	1405-86-3	C <sub>42</sub> H <sub>62</sub> O <sub>16</sub> ·nH <sub>2</sub> O (C <sub>42</sub> H <sub>62</sub> O <sub>16</sub> =822.93)	070-05161	20mg	TLC	Glycyrrhiza
Hesperidin	520-26-3	C <sub>28</sub> H <sub>34</sub> O <sub>15</sub> =610.56	086-08361	10mg	ICD & TLC	Citrus Unshiu Peel
Icariin	56692-02-5	C <sub>33</sub> H <sub>40</sub> O <sub>15</sub> =676.66	094-05281	20mg	TLC	Epimedium Herb
(Z)-Ligustilide	4431-01-0	C <sub>12</sub> H <sub>14</sub> O <sub>2</sub> =190.24	128-05311	20mg	TLC	Japanese Angelica Root
Loganin	18524-94-2	C <sub>17</sub> H <sub>26</sub> O <sub>10</sub> =390.38	123-05121	20mg	TLC	Cornus Fruit
Magnolol	528-43-8	C <sub>18</sub> H <sub>18</sub> O <sub>2</sub> =266.33	135-14911	20mg	ICD	Magnolia Bark
Paeoniflorin	23180-57-6	C <sub>23</sub> H <sub>28</sub> O <sub>11</sub> ·nH <sub>2</sub> O (C <sub>23</sub> H <sub>28</sub> O <sub>11</sub> =480.46)	164-21731	10mg	TLC	Peony Root
Paeonol	552-41-0	C <sub>9</sub> H <sub>10</sub> O <sub>3</sub> =166.18	167-21721	10mg	ICD & TLC	Moutan Bark

<sup>\*</sup>Grade TLC ; Thin layer chromatography test on The Japanese Pharmacopoeia ICD ; Ingredient content determination on The Japanese Pharmacopoeia  
PT ; Purity test on The Japanese Pahrnacopoeia CDT ; For crude drug research test

Product name	CAS No.	Molecular formula, MW	Product No.	Size	Grade <sup>**</sup>	Crude drug
Puerarin	3681-99-0	C <sub>21</sub> H <sub>20</sub> O <sub>9</sub> =416.38	165-22001	20mg	TLC	Pueraria Root
Resibufogenin	465-39-4	C <sub>24</sub> H <sub>32</sub> O <sub>4</sub> ·nH <sub>2</sub> O (C <sub>24</sub> H <sub>32</sub> O <sub>4</sub> =384.52)	187-01921	20mg	ICD & TLC	Toad Venom
Rhynchophylline	76-66-4	C <sub>22</sub> H <sub>28</sub> N <sub>2</sub> O <sub>4</sub> =384.47	184-01931	10mg	ICD	Uncaria Hook
Saikosaponin a	20736-09-8	C <sub>42</sub> H <sub>68</sub> O <sub>13</sub> =780.98	190-13541	10mg	TLC	Bupleurum Root
Senoside A	81-27-6	C <sub>42</sub> H <sub>38</sub> O <sub>20</sub> =862.74	197-13931	10mg	ICD & TLC	Senna Leaf, Rhubarb
Senoside B	128-57-4	C <sub>42</sub> H <sub>38</sub> O <sub>20</sub> =862.74	194-13941	10mg	ICD	Senna Leaf, Rhubarb
Schizandrin	7432-28-2	C <sub>21</sub> H <sub>32</sub> O <sub>7</sub> =432.51	197-13551	20mg	TLC	Schisandra Fruit
Swertiamarin	17388-39-5	C <sub>16</sub> H <sub>22</sub> O <sub>10</sub> =374.34	191-13951	20mg	TLC	Swertia Herb
[6]-Shogaol	555-66-8	C <sub>17</sub> H <sub>24</sub> O <sub>3</sub> =276.37	199-14111	5mg	TLC	Processed Ginger

## B ; Standards for crude drug research test

Product name	CAS No.	Molecular formula, MW	Product No.	Size	Grade <sup>**</sup>	Crude drug
Aconitine Standard	302-27-2	C <sub>34</sub> H <sub>47</sub> NO <sub>11</sub> =645.75	019-14621	20mg	CDT	Processed Aconite Root
Albiflorin Standard	39011-90-0	C <sub>23</sub> H <sub>28</sub> O <sub>11</sub> =480.46	012-14091	20mg	CDT	Peony Root
Alisol B Acetate	26575-95-1	C <sub>33</sub> H <sub>50</sub> O <sub>5</sub> =514.74	018-13231	20mg	CDT	Alisma Rhizome
Alisol B Standard	18649-93-9	C <sub>30</sub> H <sub>48</sub> O <sub>4</sub> =472.70	010-13431	20mg	CDT	Alisma Rhizome
Alkannin Standard	517-88-4	C <sub>16</sub> H <sub>16</sub> O <sub>5</sub> =288.30	013-19901	10mg	CDT	Lithospermum Root
Atractylenolide III Standard	73030-71-4	C <sub>15</sub> H <sub>20</sub> O <sub>3</sub> =248.32	012-14611	20mg	CDT	Atractylodes Rhizome
Atropine Sulfate Standard	5908-99-6	(C <sub>17</sub> H <sub>23</sub> NO <sub>3</sub> ) <sub>2</sub> ·H <sub>2</sub> SO <sub>4</sub> · H <sub>2</sub> O=694.83	016-11691	20mg	CDT	Scopolia Rhizome, Belladonna Root
Aucubin Standard	479-98-1	C <sub>15</sub> H <sub>22</sub> O <sub>9</sub> =346.33	016-10351	20mg	CDT	Plantago Herb
Baicalin Standard	491-67-8	C <sub>15</sub> H <sub>10</sub> O <sub>5</sub> =270.24	027-07751	20mg	CDT	Scutellaria Root
Baicalin Standard	21967-41-9	C <sub>21</sub> H <sub>18</sub> O <sub>11</sub> ·H <sub>2</sub> O=464.38	020-07741	20mg	CDT	Scutellaria Root

<sup>\*\*</sup> Grade TLC ; Thin layer chromatography test on The Japanese Pharmacopoeia ICD ; Ingredient content determination on The Japanese Pharmacopoeia  
PT ; Purity test on The Japanese Pharmacopoeia CDT ; For crude drug research test

Product name	CAS No.	Molecular formula, MW	Product No.	Size	Grade *	Crude drug
Barbaloin Standard	1415-73-2	C <sub>21</sub> H <sub>22</sub> O <sub>9</sub> =418.40	022-08161	10mg	CDT	Aloe
Berberine Chloride Standard	141433-60-5	C <sub>20</sub> H <sub>18</sub> ClNO <sub>4</sub> ·nH <sub>2</sub> O (C <sub>20</sub> H <sub>18</sub> ClNO <sub>4</sub> =371.81)	022-07681	20mg	CDT	Coptis Rhizome, Phellodendron Bark
Bergenin Standard	477-90-7	C <sub>14</sub> H <sub>16</sub> O <sub>9</sub> ·H <sub>2</sub> O=346.29	028-12051	20mg	CDT	Mallotus Bark
Bufalin Standard	465-21-4	C <sub>24</sub> H <sub>34</sub> O <sub>4</sub> =386.53	025-10121	20mg	CDT	Toad Venom
Bufotalin Standard	471-95-4	C <sub>26</sub> H <sub>36</sub> O <sub>6</sub> =444.57	024-10691	20mg	CDT	Toad Venom
Capillarisin Standard	56365-38-9	C <sub>16</sub> H <sub>12</sub> O <sub>7</sub> =316.27	030-10611	10mg	CDT	Artemisia Capillaris Flower
			036-10613	50mg		Artemisia Capillaris Flower
Capsaicin Standard	404-86-4	C <sub>18</sub> H <sub>27</sub> NO <sub>3</sub> =305.42	039-18981	20mg	CDT	Capsicum
Catalpol Standard	2415-24-9	C <sub>15</sub> H <sub>22</sub> O <sub>10</sub> =362.33	032-10551	20mg	CDT	Rehmannia Root
Cinobufagin Standard	470-37-1	C <sub>26</sub> H <sub>34</sub> O <sub>6</sub> =442.55	038-13711	20mg	CDT	Toad Venom
Cinobufotalin Standard	1108-68-5	C <sub>26</sub> H <sub>34</sub> O <sub>7</sub> =458.55	035-13721	20mg	CDT	Toad Venom
Coptisine Chloride	6020-18-4	C <sub>19</sub> H <sub>14</sub> ClNO <sub>4</sub> =355.78	036-11311	20mg	CDT	Coptis Rhizome
Corydaline Standard	518-69-4	C <sub>22</sub> H <sub>27</sub> NO <sub>4</sub> =369.46	036-14971	20mg	CDT	Corydalis Tuber
Costunolide Standard	553-21-9	C <sub>15</sub> H <sub>20</sub> O <sub>2</sub> =232.32	032-13731	20mg	CDT	Poria Sclerotium
Dehydrocorydaline Nitrate Standard	13005-09-9	C <sub>22</sub> H <sub>24</sub> N <sub>2</sub> O <sub>7</sub> =428.44	043-27611	10mg	CDT	Corydalis Tuber
Dehydrocostuslactone Standard	477-43-0	C <sub>15</sub> H <sub>18</sub> O <sub>2</sub> =230.30	040-21881	20mg	CDT	Saussurea Root
Dimethylesculetin Standard	—	C <sub>11</sub> H <sub>10</sub> O <sub>4</sub> =206.20	042-18911	20mg	CDT	Artemisia Capillaris Flower
Epihesperidin Standard	—	C <sub>28</sub> H <sub>34</sub> O <sub>15</sub> =610.56	085-08211	10mg	CDT	Citrus Unshiu Peel
β-Eudesmol Standard	473-15-4	C <sub>15</sub> H <sub>26</sub> O=222.37	056-05161	20mg	CDT	Atractylodes Lancea Rhizome
Ergosterol Standard	57-87-4	C <sub>28</sub> H <sub>44</sub> O=396.63	052-04921	20mg	CDT	Poria Sclerotium
Evodiamine Standard	518-17-2	C <sub>19</sub> H <sub>17</sub> N <sub>3</sub> O=303.36	050-04601	20mg	CDT	Evodia Fruit
Geniposidic Acid Standard	27741-01-1	C <sub>16</sub> H <sub>22</sub> O <sub>10</sub> =374.34	078-02301	20mg	CDT	Gardenia Fruit
Gentiopicroside Standard	20831-76-9	C <sub>16</sub> H <sub>20</sub> O <sub>9</sub> =356.32	077-04831	10mg	CDT	Japanese Gentian, Gentian
Ginsenoside-Rb1 Standard	41753-43-9	C <sub>54</sub> H <sub>92</sub> O <sub>23</sub> =1109.29	079-02191	10mg	CDT	Panax ginseng

※ Grade TLC ; Thin layer chromatography test on The Japanese Pharmacopoeia ICD ; Ingredient content determination on The Japanese Pharmacopoeia  
PT ; Purity test on The Japanese Pharmacopoeia CDT ; For crude drug research test

Product name	CAS No.	Molecular formula, MW	Product No.	Size	Grade *	Crude drug
Ginsenoside-Rc	11021-14-0	C <sub>53</sub> H <sub>90</sub> O <sub>22</sub> =1079.27	078-03261	20mg	CDT	Panax ginseng
Ginsenoside-Rd Standard	52705-93-8	C <sub>46</sub> H <sub>82</sub> O <sub>18</sub> =947.17	072-03301	20mg	CDT	Panax ginseng
Ginsenoside-Re Standard	52286-59-6	C <sub>48</sub> H <sub>82</sub> O <sub>18</sub> =947.17	075-03271	20mg	CDT	Panax ginseng
Ginsenoside-Rg1 Standard	22427-39-0	C <sub>42</sub> H <sub>72</sub> O <sub>14</sub> =801.03	072-02201	10mg	CDT	Panax ginseng
Glabridin	—	C <sub>20</sub> H <sub>20</sub> O <sub>4</sub> =324.37	074-04829	1g	CDT	Glycyrrhiza
			070-04821	20mg		
Glycyrrhizic Acid Standard	1405-86-3	C <sub>42</sub> H <sub>62</sub> O <sub>16</sub> ·nH <sub>2</sub> O (C <sub>42</sub> H <sub>62</sub> O <sub>16</sub> =822.93)	071-02271	20mg	CDT	Glycyrrhiza
Gomisin A Standard	58546-54-6	C <sub>23</sub> H <sub>28</sub> O <sub>7</sub> =416.46	077-04951	10mg	CDT	Schisandra Fruit
Gomisin N Standard	—	C <sub>23</sub> H <sub>28</sub> O <sub>6</sub> =400.46	074-04961	10mg	CDT	Schisandra Fruit
Hirsutine Standard	7729-23-9	C <sub>22</sub> H <sub>28</sub> N <sub>2</sub> O <sub>3</sub> =368.47	082-08081	5mg	CDT	Uncaria Hook
Honokiol Standard	35354-74-6	C <sub>18</sub> H <sub>18</sub> O <sub>2</sub> =266.34	083-04959	2g	CDT	Magnolia Bark
			089-04951	20mg		
Hypaconitine	6900-87-4	C <sub>33</sub> H <sub>45</sub> NO <sub>10</sub> =615.72	084-07061	20mg	CDT	Processed Aconite Root
Isofraxidine Standard	486-21-5	C <sub>11</sub> H <sub>10</sub> O <sub>5</sub> =222.20	099-03651	20mg	CDT	Acanthopanax Root Bark
Liquiritin Standard	—	C <sub>21</sub> H <sub>22</sub> O <sub>9</sub> ·H <sub>2</sub> O=436.41	125-03361	20mg	CDT	Glycyrrhiza
Loganin Standard	18524-94-2	C <sub>17</sub> H <sub>26</sub> O <sub>10</sub> =390.38	125-03621	20mg	CDT	Cornus Fruit
Mesaconitine	2752-64-9	C <sub>33</sub> H <sub>45</sub> NO <sub>11</sub> =631.71	130-12261	20mg	CDT	Processed Aconite Root
Naringin Standard	10236-47-2	C <sub>27</sub> H <sub>32</sub> O <sub>14</sub> =580.54	140-06211	20mg	CDT	Bitter Orange Peel
Nodakenin Standard	495-31-8	C <sub>20</sub> H <sub>24</sub> O <sub>9</sub> =408.40	148-08331	5mg	CDT	Peucedani Radix
Osthole Standard	484-12-8	C <sub>15</sub> H <sub>16</sub> O <sub>3</sub> =244.29	151-01801	20mg	CDT	Cnidium Monnieri Fruit
Oxymatrine Standard	16837-52-8	C <sub>15</sub> H <sub>24</sub> N <sub>2</sub> O <sub>2</sub> =264.37	150-01511	20mg	CDT	Sophora Root
Paeoniflorin Standard	23180-57-6	C <sub>23</sub> H <sub>28</sub> O <sub>11</sub> =480.46	167-11711	10mg	CDT	Peony Root
			163-11713	50mg		
Paeonol Standard	552-41-0	C <sub>9</sub> H <sub>10</sub> O <sub>3</sub> =166.18	169-12871	10mg	CDT	Moutan Bark
Palmatine Chloride Standard	10605-02-4	C <sub>21</sub> H <sub>22</sub> ClNO <sub>4</sub> =387.86	166-17641	20mg	CDT	Coptis Rhizome, Phellodendron Bark
Praeruptorin A Standard	73069-25-7	C <sub>21</sub> H <sub>22</sub> O <sub>7</sub> =386.40	168-22231	10mg	CDT	Peucedani Radix
Resibufogenin Standard	465-39-4	C <sub>24</sub> H <sub>32</sub> O <sub>4</sub> =384.52	184-00951	20mg	CDT	Toad Venom

※ Grade TLC ; Thin layer chromatography test on The Japanese Pharmacopoeia ICD ; Ingredient content determination on The Japanese Pharmacopoeia  
PT ; Purity test on The Japanese Pharmacopoeia CDT ; For crude drug research test

Product name	CAS No.	Molecular formula, MW	Product No.	Size	Grade *	Crude drug
Rhynchophylline Standard	76-66-4	C <sub>22</sub> H <sub>28</sub> N <sub>2</sub> O <sub>4</sub> =384.47	186-01871	10mg	CDT	Uncaria Hook
Saikosaponin b2 Standard	58316-41-9	C <sub>42</sub> H <sub>68</sub> O <sub>13</sub> =780.99	194-10021	20mg	CDT	Bupleurum Root
Saikosaponin c Standard	20736-08-7	C <sub>48</sub> H <sub>78</sub> O <sub>17</sub> =927.12	197-08421	10mg	CDT	Bupleurum Root
Saikosaponin d Standard	20874-52-6	C <sub>42</sub> H <sub>68</sub> O <sub>13</sub> =780.99	194-08431	10mg	CDT	Bupleurum Root
Scopolamine Hydrobromide <i>n</i> -Hydrate	114-49-8	C <sub>17</sub> H <sub>21</sub> NO <sub>4</sub> ·HBr=384.27	197-09261	20mg	CDT	Belladonna Root, Scopolia Rhizome
Sennoside A Standard	81-27-6	C <sub>42</sub> H <sub>38</sub> O <sub>20</sub> =862.74	190-08531	10mg	CDT	Senna Leaf, Rhubarb
Sennoside B	128-57-4	C <sub>42</sub> H <sub>38</sub> O <sub>20</sub> =862.74	194-09271	20mg	CDT	Senna Leaf, Rhubarb
Sennoside B Standard	128-57-4	C <sub>42</sub> H <sub>38</sub> O <sub>20</sub> =862.74	199-11811	10mg	CDT	Senna Leaf, Rhubarb
Shikonin (mixture of optical isomers, about 1:1)	54952-43-1	C <sub>16</sub> H <sub>16</sub> O <sub>5</sub> =288.30	198-13601	10mg	CDT	Lithospermum Root
Shikonin (mixture of optical isomers, about 6:1)	517-89-5	C <sub>16</sub> H <sub>16</sub> O <sub>5</sub> =288.30	198-13581	10mg	CDT	Lithospermum Root
Shikonin Standard	517-89-5	C <sub>16</sub> H <sub>16</sub> O <sub>5</sub> =288.30	191-13331	10mg	CDT	Lithospermum Root
Sinomenine Standard	115-53-7	C <sub>15</sub> H <sub>23</sub> NO <sub>4</sub> =329.39	193-09361	20mg	CDT	Sinomenium Stem
Swertiamarin Standard	17388-39-5	C <sub>16</sub> H <sub>22</sub> O <sub>10</sub> =374.34	197-08541	20mg	CDT	Swertia Herb
Wogonin Standard	632-85-9	C <sub>16</sub> H <sub>12</sub> O <sub>5</sub> =284.27	231-00811	10mg	CDT	Scutellaria Root

※ Grade TLC ; Thin layer chromatography test on The Japanese Pharmacopoeia ICD ; Ingredient content determination on The Japanese Pharmacopoeia  
PT ; Purity test on The Japanese Pharmacopoeia CDT ; For crude drug research test

- Listed products are intended for laboratory research use only, but not to be used for drug, food or human use.
- Please visit our online catalog to search for other products from Wako ; <http://www.e-reagent.com>
- This brochure may contain products that cannot be exported to your country due to regulations.

#### Wako Pure Chemical Industries, Ltd.

<http://www.wako-chem.co.jp>  
1-2, Doshomachi 3-Chome  
Chuo-Ku, Osaka 540-8605, Japan  
Tel: 81-6-6203-3741  
Fax: 81-6-6201-5964

#### Wako Chemicals USA, Inc.

<http://www.wakousa.com>  
Toll-Free (U.S. only): 1-877-714-1920  
Head Office (Richmond, VA):  
Tel: 1-804-714-1920 / Fax: 1-804-271-7791  
Los Angeles Sales Office (Irvine, CA):  
Tel: 1-949-679-1700 / Fax: 1-949-679-1701  
Boston Sales Office (Cambridge, MA):  
Tel: 1-617-354-6772 / Fax: 1-617-354-6774

#### Wako Chemicals GmbH

<http://www.wako-chemicals.de>  
European Office:  
Nissanstraße 2, D-41468  
Neuss, Germany  
Tel: 49-2131-311-0  
Fax: 49-2131-311100