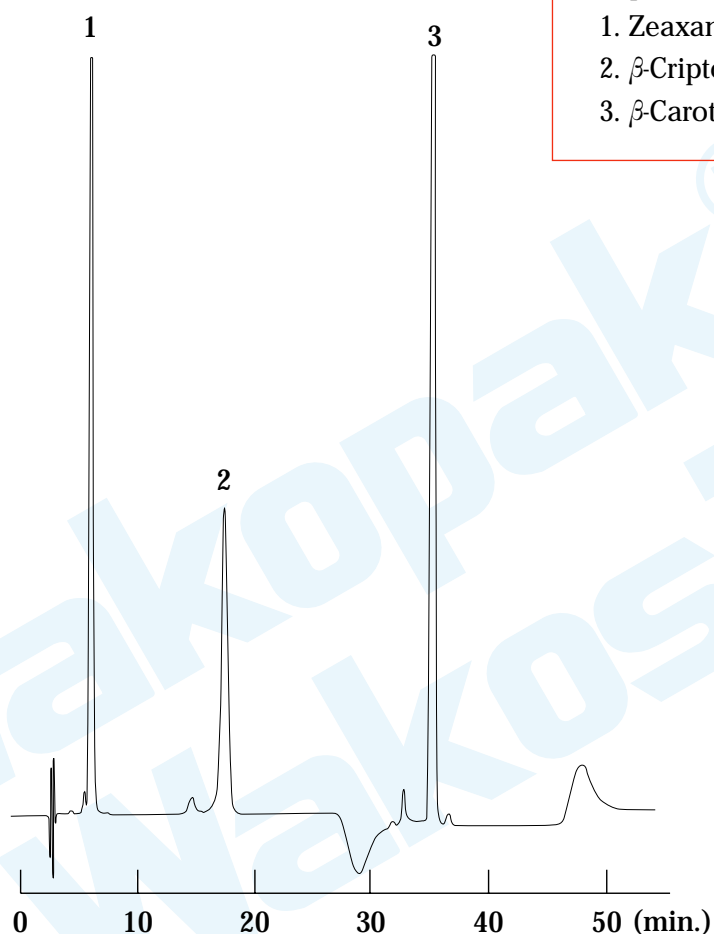


HPLC Application

Analysis of Carotenoides

Category : Plants



Sample :

1. Zeaxanthin (2.0 μ g/mL)
2. β -Criptoxanthin (2.0 μ g/mL)
3. β -Carotene (3.483 μ g/mL)

[HPLC Conditions]

Column : Wakosil-DNPH, 4.6mm I.D. x 250mm

Eluent : A) CH₃OH/TBME/H₂O = 66/30/4 (v/v/v) (TBME : t-Butyl Methyl Ether)

B) CH₃OH/TBME/H₂O = 46/50/4 (v/v/v)

0-20min. B conc. 0%, 21-39min. B conc. 100%, 40min. B conc. 0%

Flow rate : 0.7mL/min, at 35°C

Detection : Vis 451nm, ATTN = 3

Injection : 10 μ L