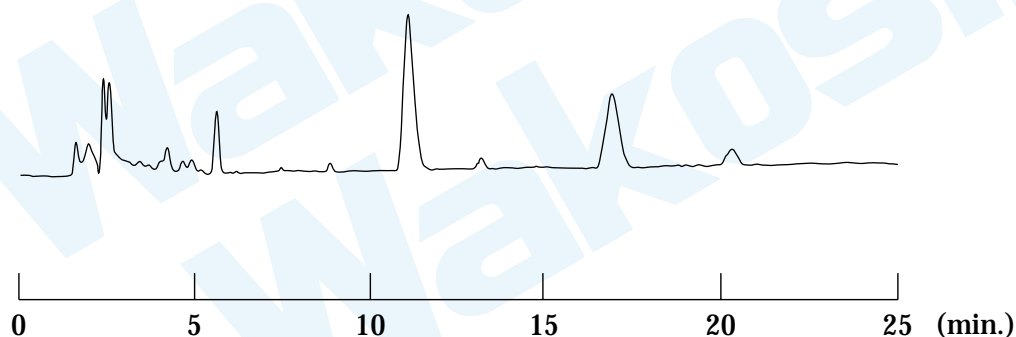


HPLC Application

Analysis of Beet Red

Category : Foods, additive of Foods

Sample : Beet Red



[HPLC Conditions]

Column : Wakosil-II 5C18 RS, 4.6mm I.D. x 150mm

Eluent : A) CH₃CN/H₂O = 5/95 (v/v), 0.05% TFA (Trifluoroacetic Acid)

B) CH₃CN/H₂O = 100/0 (v/v), 0.05% TFA

0-25min. B conc. 0%

Flow rate : 1.0mL/min, at 40°C

Detection : UV Max. 310-800nm, 0.04 AUFS.

Injection : 10 μ L, 10mg/mL (0.1% TFA)