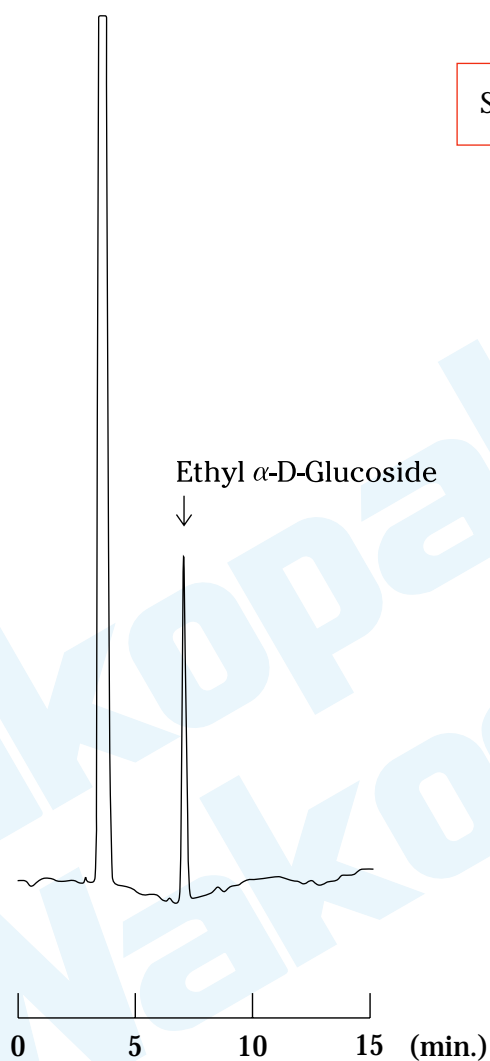


HPLC Application

Analysis of Ethyl α -D-Glucoside

Category : Foods

Sample : Ethyl α -D-Glucoside



[HPLC Conditions]

Column : Wakosil 5NH₂, 4.6mm I.D. x 250mm

Eluent : CH₃CN/H₂O = 80/20 (v/v)

Flow rate : 1.0mL/min, at R.T.

Detection : RI, ATTEN = 8

Injection : 10 μ L, 5mg/mL (H₂O)