

Anti Iba1, Monoclonal Antibody
(Clone No. NCNP24, Code No. 012-26723)
によるラット大脳皮質ミクログリア免疫組織染色

和光純薬工業は、 抗体も高品質。

市販の抗体は、便利だけど性能がイマイチ。
そんな声に応えるべく、和光純薬工業では、
高品質の抗体を提供しております。

それなのに和光純薬工業が抗体を
販売していることはあまり知られていません。

悔しいので、抗体お試しキャンペーンを始めました。
和光純薬工業の高品質抗体を一度お試しください。

抗体お試しキャンペーン

2017年12月1日～2018年2月28日

対象製品全品

40% OFF

対象品目

神経研究関連抗体

癌研究関連抗体

生理活性物質関連抗体

microRNA研究関連抗体

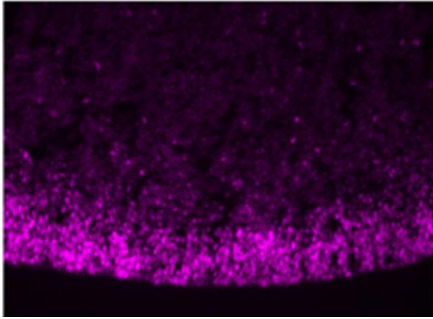
その他抗体

(詳細は次項以降の対象製品リストをご覧ください)

1. 神経研究関連抗体

抗Pax6抗体 (Code No.019-27291)

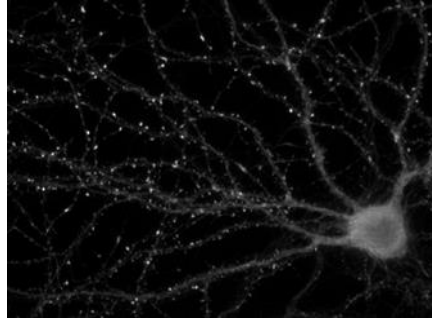
神経幹細胞、神経前駆細胞マーカー



サンプル:ラット大脳皮質(胎生13.5日目)
抗体濃度:1μg/mL
二次抗体:抗ウサギ IgG, Cy3標識

抗Drebrin抗体 (Code No.015-27271)

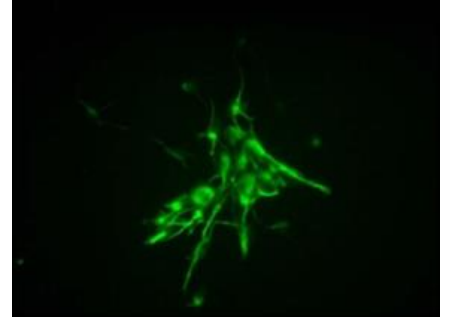
スパインマーカー



サンプル:海馬由来初代培養神経細胞(21DIV)
抗体濃度:1μg/mL
二次抗体:抗マウス IgG, FITC標識

抗Nestin抗体 (Code No.016-26841)

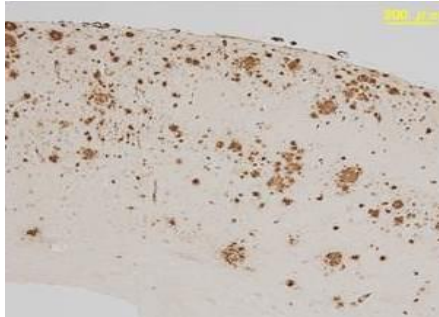
神経前駆細胞マーカー



サンプル:マウス神経前駆細胞
抗体濃度:10μg/mL
二次抗体:抗ラットIgG-Alexa Fluor 488

抗Amyloid β抗体 (BAN50) (Code No.017-26871)

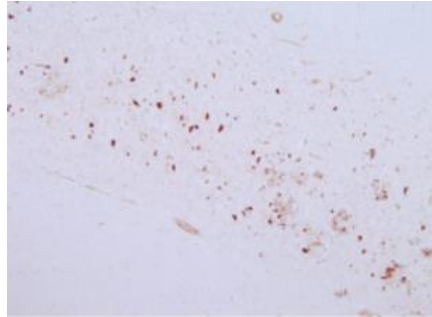
アルツハイマー病関連因子



サンプル:アルツハイマー病モデルマウス脳
抗体濃度:1μg/mL
二次抗体:抗マウスIgG, ビオチン標識

抗りん酸化Tau S199抗体 (Code No.019-26613)

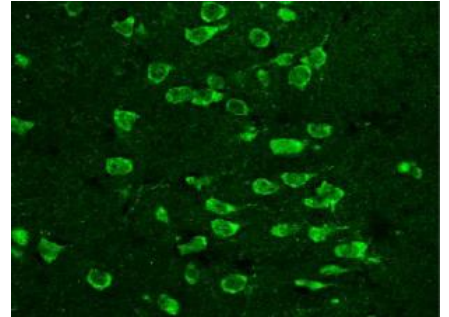
アルツハイマー病関連因子



サンプル:アルツハイマー病患者の脳海馬
抗体濃度:1μg/mL
二次抗体:抗マウス IgG, ビオチン標識

抗5-HT1A受容体抗体 (Code No.016-25981)

セロトニン受容体の1種



サンプル:マウス脳前頭前野
抗体濃度:1μg/mL
二次抗体:抗ラットIgG-Alexa Fluor 488

| 標的 | コードNo. | 製品名 | クローンNo. | 交差性 | アプリケーション | 容量 | 希望納入価格 (円) | キャンペーン価格 (円) |
|----------------------------|-----------|---|------------|-------------------|-------------------------|-------|---------------|-----------------|
| | | | 免疫動物 | アイソタイプ | | | | |
| Amyloid Precursor Protein | 014-27241 | Anti Amyloid Precursor Protein, Monoclonal Antibody | 3E9 | Human, Mouse | WB | 10μL | 10,000 | 6,000 |
| | 010-27243 | | Mouse | IgG1 | | 50μL | 30,000 | 18,000 |
| Amyloid β | 014-26881 | Anti Amyloid β, Monoclonal Antibody | BNT77 | Mouse, Rat, Human | IHC, IP, ELISA | 10μL | 10,000 | 6,000 |
| | 010-26883 | | Mouse | IgA・κ | | 50μL | 35,000 | 21,000 |
| Amyloid β | 017-26871 | Anti Human Amyloid β, Monoclonal Antibody | BAN50 | Human | WB, ICC, IHC, IP, ELISA | 10μL | 10,000 | 6,000 |
| | 013-26873 | | Mouse | IgG1・κ | | 50μL | 35,000 | 21,000 |
| Amyloid β40 | 018-26921 | Anti Amyloid β40, Monoclonal Antibody | BA27 | Mouse, Rat, Human | WB, IHC, ELISA | 10μL | 10,000 | 6,000 |
| | 014-26923 | | Mouse | IgG2a・κ | | 50μL | 35,000 | 21,000 |
| Amyloid β42(43) | 014-26901 | Anti Amyloid β42(43), Monoclonal Antibody | BC05 | Mouse/Rat Human | WB, IHC, ELISA | 10μL | 10,000 | 6,000 |
| | 010-26903 | | Mouse | IgG1・κ | | 50μL | 35,000 | 21,000 |
| Apolipoprotein E4 | 018-27261 | Anti Human Apolipoprotein E4, Monoclonal Antibody | 1F9 | Human | WB, IHC | 10μL | 10,000 | 6,000 |
| | 014-27263 | | Mouse | IgG1 | | 50μL | 35,000 | 21,000 |
| CRMP2 | 014-24821 | Anti CRMP2, Monoclonal Antibody | 9F | Mouse, Rat, Human | WB, IHC, ICC, ELISA | 100μL | 34,000 | 20,400 |
| | | | Mouse | IgG | | | | |
| Drebrin | 015-27271 | Anti Drebrin, Monoclonal Antibody | M2F6 | Mouse, Rat, Human | WB, ICC | 10μL | 10,000 | 6,000 |
| | 011-27273 | | Mouse | IgG1・κ | | 50μL | 30,000 | 18,000 |
| 4.1G/EPB41L2 | 018-26421 | Anti Mouse 4.1G/EPB41L2, Rabbit | Polyclonal | Mouse | WB, IHC | 50μL | 40,000 | 24,000 |
| | | | Rabbit | IgG | | | | |
| Phosphorylated GAP-43 S96 | 017-25391 | Anti Phosphorylated GAP-43 S96, Monoclonal Antibody | 16-4C | Mouse/Rat | WB, IHC | 100μL | 45,000 | 27,000 |
| | | | Mouse | IgG1 | | | | |
| Phosphorylated GAP-43 S96 | 010-25401 | Anti Phosphorylated GAP-43 S96, Monoclonal Antibody | 18-10H-9H | Mouse, Rat | WB, IHC | 100μL | 45,000 | 27,000 |
| | | | Mouse | IgG1 | | | | |
| Phosphorylated GAP-43 T172 | 017-25411 | Anti Phosphorylated GAP-43 T172, Monoclonal Antibody | 19-9A | Mouse, Rat, Human | IHC | 100μL | 45,000 | 27,000 |
| | | | Mouse | IgG1 | | | | |
| GFAP | 012-27281 | Anti GFAP, Monoclonal Antibody | MQ389 | Human | WB, ICC | 10μL | 10,000 | 6,000 |
| | 018-27283 | | Mouse | IgG1 | | 50μL | 30,000 | 18,000 |
| Phosphorylated GFAP S13 | 016-27321 | Anti Human Phosphorylated GFAP S13, Monoclonal Antibody | KT13 | Human | WB, ICC | 10μL | 10,000 | 6,000 |
| | 012-27323 | | Mouse | IgG1 | | 50μL | 30,000 | 18,000 |
| Phosphorylated GFAP S8 | 012-27301 | Anti Human Phosphorylated GFAP S8, Monoclonal Antibody | YC10 | Human | WB, ICC | 10μL | 10,000 | 6,000 |
| | 018-27303 | | Mouse | IgG1 | | 50μL | 30,000 | 18,000 |
| 5-HT1A Receptor | 016-25981 | Anti Mouse 5-HT1A Receptor, Rat Monoclonal Antibody | 4A6 | Mouse | IHC(F), FC | 50μL | 30,000 | 18,000 |
| | | | Rat | IgG2b・κ | | | | |
| 5-HT2C Receptor | 013-25991 | Anti Mouse 5-HT2C Receptor, Rat Monoclonal Antibody | 6D2 | Mouse | IHC(F), FC | 50μL | 30,000 | 18,000 |
| | | | Rat | IgG2a・κ | | | | |
| Iba1 | 012-26723 | Anti Iba1, Monoclonal Antibody | NCNP24 | Mouse, Rat | IHC(F) | 10μL | 10,000 | 6,000 |
| | 016-26721 | | Mouse | IgG1・κ | | 50μL | 35,000 | 21,000 |
| Iba1 | 016-26461 | Anti Iba1, Rabbit, Biotin-conjugated | Polyclonal | Mouse, Rat | IHC(F) | 100μL | 45,000 | 27,000 |
| | | | Rabbit | IgG | | | | |
| ICK | 015-26431 | Anti Mouse ICK, Guinea Pig | Polyclonal | Mouse | WB, ICC | 50μL | 40,000 | 24,000 |
| | | | Guinea Pig | IgG | | | | |

次ページに続く

【アプリケーション略号一覧】

FC: フローサイトメトリー、ICC: 免疫細胞染色、IHC: 免疫組織染色、IHC(F): 免疫組織染色(凍結切片)、IP: 免疫沈降、WB: ウェスタンブロッティング
Neu: 中和活性あり、ADCC: 抗体依存性細胞傷害あり、CDC: 補体依存性細胞傷害あり

| 標的 | コードNo. | 製品名 | クローンNo. | 交差性 | アプリケーション | 容量 | 希望納入価格 (円) | キャンペーン価格 (円) |
|-------------------------------|-----------|--|------------|---------------------|-----------------------|-------|---------------|-----------------|
| | | | 免疫動物 | アイソタイプ | | | | |
| Mak | 012-26441 | Anti Mouse Mak, Guinea Pig | Polyclonal | Mouse | WB, ICC | 50µL | 40,000 | 24,000 |
| | | | Guinea Pig | IgG | | | | |
| Nestin | 016-26841 | Anti Mouse Nestin, Rat Monoclonal Antibody | 7A3 | Mouse | IHC, ICC | 10µL | 10,000 | 6,000 |
| | 012-26843 | | Rat | IgG2b・k | | 50µL | 30,000 | 18,000 |
| NGF | 018-27141 | Anti NGF, Monoclonal Antibody | NGFA-133 | Human, Mouse, Rat | Neu, ELISA | 10µL | 10,000 | 6,000 |
| | 014-27143 | | Mouse | IgG1 | | 50µL | 35,000 | 21,000 |
| NT-3 | 015-27151 | Anti NT-3, Monoclonal Antibody | 3W3 | Human, Mouse, Rat | Neu, IHC(F), ELISA | 10µL | 10,000 | 6,000 |
| | 011-27153 | | Mouse | IgG1 | | 50µL | 35,000 | 21,000 |
| Parkin | 010-27341 | Anti Parkin, Monoclonal Antibody | Par6 | Human, Mouse, Rat | WB | 10µL | 10,000 | 6,000 |
| | 016-27343 | | Mouse | IgG2a・k | | 50µL | 30,000 | 18,000 |
| Pax6 | 019-27291 | Anti Pax6, Rabbit | Polyclonal | Mouse, Rat, Chicken | WB, IHC | 10µL | 10,000 | 6,000 |
| | 015-27293 | | Rabbit | IgG | | 50µL | 30,000 | 18,000 |
| Serotonin Transporter | 011-26911 | Anti Mouse Serotonin Transporter, Rat Monoclonal Antibody | R5-3-2 | Mouse | IHC(F), ELISA | 10µL | 10,000 | 6,000 |
| | 012-26913 | | Rat | IgG2a・k | | 50µL | 30,000 | 18,000 |
| Synaptophysin | 013-27331 | Anti Synaptophysin, Monoclonal Antibody | 171B5 | Human, Mouse, Rat | WB, IHC | 10µL | 10,000 | 6,000 |
| | 019-27333 | | Mouse | IgG1 | | 50µL | 30,000 | 18,000 |
| Phosphorylated α-Synuclein | 010-26481 | Anti Phosphorylated α-Synuclein, Monoclonal Antibody, Biotin-conjugated | pSyn#64 | Human, Mouse, Rat | IHC | 100µL | 45,000 | 27,000 |
| | | | Mouse | IgG | | | | |
| Tau (Human specific) | 019-26951 | Anti Human Tau, Rat Monoclonal Antibody | RTM49 | Human | WB, IHC, ICC | 10µL | 10,000 | 6,000 |
| | 015-26953 | | Rat | IgG1・k | | 50µL | 35,000 | 21,000 |
| Tau | 011-26891 | Anti Human/Mouse/Rat Tau, Rat Monoclonal Antibody | RTM38 | Human, Mouse, Rat | WB, IHC, ICC | 10µL | 10,000 | 6,000 |
| | 017-26893 | | Rat | IgG2a・k | | 50µL | 35,000 | 21,000 |
| Tau (Mouse specific) | 016-26961 | Anti Mouse Tau, Rat Monoclonal Antibody | RTM47 | Mouse | WB, IHC, ICC | 10µL | 10,000 | 6,000 |
| | 012-26963 | | Rat | IgG2b・k | | 50µL | 35,000 | 21,000 |
| 2N-Tau | 017-27351 | Anti 2N-Tau, Rat Monoclonal Antibody | 2C2 | Human | WB, IHC, ELISA | 10µL | 10,000 | 6,000 |
| | 013-27353 | | Rat | IgM・k | | 50µL | 30,000 | 18,000 |
| 3R-Tau | 012-26583 | Anti 3R-Tau, Rat Monoclonal Antibody | 2A1-1F4 | Human | WB, IP | 10µL | 10,000 | 6,000 |
| | 016-26581 | | Rat | IgG2b・λ | | 50µL | 30,000 | 18,000 |
| 4R-Tau | 019-26593 | Anti 4R-Tau, Monoclonal Antibody | 3E8-1A6 | Human | WB, IP | 10µL | 10,000 | 6,000 |
| | 013-26591 | | Mouse | IgG1・k | | 50µL | 30,000 | 18,000 |
| Phosphorylated Tau S262 | 014-27121 | Anti Phosphorylated Tau S262, Rat Monoclonal Antibody | TIP1-35 | Human | ELISA | 10µL | 10,000 | 6,000 |
| | 010-27123 | | Rat | IgG1・λ | | 50µL | 35,000 | 21,000 |
| Phosphorylated Tau S199 | 019-26613 | Anti Phosphorylated Tau S199, Rat Monoclonal Antibody | 5B8-1E2 | Human | WB, IHC | 10µL | 10,000 | 6,000 |
| | 013-26611 | | Rat | IgG2a・k | | 50µL | 30,000 | 18,000 |
| Phosphorylated Tau T181 | 012-26603 | Anti Phosphorylated Tau T181, Rat Monoclonal Antibody | 2E2-A6 | Human | WB, IHC | 10µL | 10,000 | 6,000 |
| | 016-26601 | | Rat | IgG2b・k | | 50µL | 30,000 | 18,000 |

2. 癌研究関連抗体

| 標的 | コードNo. | 製品名 | クローンNo. | 交差性 | アプリケーション | 容量 | 希望納入価格 (円) | キャンペーン価格 (円) |
|------------------------|-----------|---|-----------|--------------------------|------------------------------|-------|---------------|-----------------|
| | | | 免疫動物 | アイソタイプ | | | | |
| ATRAX | 017-26751 | Anti ATRX, Monoclonal Antibody | AMab-6 | Human | WB, IHC, ELISA | 100µg | 40,000 | 24,000 |
| | | | Mouse | IgG1・k | | | | |
| HB-EGF | 013-27191 | Anti HB-EGF, Monoclonal Antibody | Y-073 | Human, Mouse, Rat | Neu, ELISA | 10µL | 10,000 | 6,000 |
| | 019-27193 | | Mouse | IgG1・k | | 50µL | 35,000 | 21,000 |
| Mutated/Normal IDH1 | 014-26381 | Anti IDH1, Rat Monoclonal Antibody | RcMab-1 | Human, Hamster | WB, IHC, ICC | 100µg | 30,000 | 18,000 |
| | | | Rat | IgG2a | | | | |
| IDH1-R132H mutation | 018-24081 | Anti IDH1-R132H, Monoclonal Antibody | HMab-1 | - | WB, IHC, ELISA | 100µg | 34,000 | 20,400 |
| | | | Mouse | IgG1 | | | | |
| IDH1-R132H mutation | 013-26851 | Anti IDH1-R132H, Monoclonal Antibody | HMab-2 | Human | WB, IHC, ELISA | 100µg | 40,000 | 24,000 |
| | | | Mouse | IgG1・k | | | | |
| IDH1-R132S mutation | 015-24091 | Anti IDH1-R132S, Monoclonal Antibody | SMab-1 | - | WB, IHC, ELISA | 100µg | 34,000 | 20,400 |
| | | | Mouse | IgG1 | | | | |
| IDH2 | 011-24071 | Anti IDH2, Monoclonal Antibody | RMab-22 | Human, Mouse, Hamster | WB, IHC, ELISA | 100µg | 34,000 | 20,400 |
| | | | Mouse | IgG2b | | | | |
| Mutated IDH1/2 | 015-25691 | Anti Mutated IDH1/2, Monoclonal Antibody | MsMab-1 | - | WB, IHC, ELISA | 100µg | 34,000 | 20,400 |
| | | | Mouse | IgG2a・k | | | | |
| Podoplanin | 018-24101 | Anti Human Podoplanin, Monoclonal Antibody | NZ-1.2 | - | WB, IHC, FC, IP, ELISA | 100µg | 34,000 | 20,400 |
| | | | Rat | IgG2a | | | | |
| Podoplanin | 013-27071 | Anti Human Podoplanin, Monoclonal Antibody | LpMab-10 | Human | WB, IHC, ICC, FC, ELISA | 100µg | 34,000 | 20,400 |
| | | | Mouse | IgG3・k | | | | |
| Podoplanin | 014-27001 | Anti Human Podoplanin, Monoclonal Antibody | LpMab-12 | Human | WB, ELISA, FC, IHC, Neu | 100µg | 34,000 | 20,400 |
| | | | Mouse | IgG1・k | | | | |
| Podoplanin | 011-27011 | Anti Human Podoplanin, Monoclonal Antibody | LpMab-13 | Human | WB, IHC, FC, ELISA | 100µg | 34,000 | 20,400 |
| | | | Mouse | IgG1・k | | | | |
| Podoplanin | 018-27021 | Anti Human Podoplanin, Monoclonal Antibody | LpMab-17 | Human | WB, IHC, FC, ELISA | 100µg | 34,000 | 20,400 |
| | | | Mouse | IgG1・k | | | | |
| Podoplanin | 017-27471 | Anti Human Podoplanin, Monoclonal Antibody | LpMab-19 | Human | IHC, FC, ELISA | 100µg | 34,000 | 20,400 |
| | | | Mouse | IgG2b・k | | | | |
| Podoplanin | 014-27481 | Anti Human Podoplanin, Monoclonal Antibody | LpMab-21 | Human | IHC, FC, ELISA, ADCC, CDC | 100µg | 34,000 | 20,400 |
| | | | Mouse | IgG2a・k | | | | |
| Podoplanin | 015-27031 | Anti Rat Podoplanin, Monoclonal Antibody | PMab-2 | Rat | WB, IHC, FC, ELISA | 100µg | 34,000 | 20,400 |
| | | | Mouse | IgG1・k | | | | |
| Podoplanin | 012-27041 | Anti Rabbit Podoplanin, Monoclonal Antibody | PMab-32 | Rabbit | WB, IHC, FC, ELISA | 100µg | 34,000 | 20,400 |
| | | | Mouse | IgG1・k | | | | |
| Podoplanin | 015-24111 | Anti Mouse Podoplanin, Monoclonal Antibody | PMab-1 | Mouse | WB, IHC, FC, IP, ELISA | 100µg | 34,000 | 20,400 |
| | | | Rat | IgG2a | | | | |
| Podoplanin | 017-27091 | Anti Dog Podoplanin, Monoclonal Antibody | PMab-38 | Dog | WB, IHC, FC, ELISA | 100µg | 34,000 | 20,400 |
| | | | Mouse | IgG1・k | | | | |
| Podocalyxin | 011-27491 | Anti Human Podocalyxin, Monoclonal Antibody | PcMab-47b | Human | IHC, FC, ELISA | 100µg | 34,000 | 20,400 |
| | | | Mouse | IgG1・k | | | | |
| TERT | 010-26861 | Anti TERT, Monoclonal Antibody | TMab-6 | Human | WB, IHC, ELISA | 100µg | 40,000 | 24,000 |
| | | | Mouse | IgM・k | | | | |

3. 生理活性物質関連抗体

| 標的 | コードNo. | 製品名 | クローンNo. | 交差性 | アプリケーション | 容量 | 希望納入価格 (円) | キャンペーン価格 (円) |
|--------------|-----------|--|-----------|-----------------------------------|--------------------|-------|---------------|-----------------|
| | | | 免疫動物 | アイソタイプ | | | | |
| Apelin | 013-25871 | Anti Apelin, Monoclonal Antibody | 4G5 | Human, Mouse, Rat | ICC, Neu, ELISA | 100µL | 45,000 | 27,000 |
| | | | Mouse | IgG1 | | | | |
| CTGF Module1 | 012-27421 | Anti CTGF Module1, Monoclonal Antibody | 30D2 | Human, Mouse | Neu, ELISA | 10µL | 10,000 | 6,000 |
| | 018-27423 | | Mouse | IgG1 | | 50µL | 45,000 | 27,000 |
| CTGF Module2 | 019-27431 | Anti CTGF Module2, Monoclonal Antibody | 2-3 | Human, Mouse | Neu | 10µL | 10,000 | 6,000 |
| | 015-27433 | | Mouse | IgG1 | | 50µL | 45,000 | 27,000 |
| CTGF Module3 | 016-27441 | Anti CTGF Module3, Monoclonal Antibody | 3-54 | Human, Mouse | Neu | 10µL | 10,000 | 6,000 |
| | 012-27443 | | Mouse | IgG1 | | 50µL | 45,000 | 27,000 |
| CTGF Module4 | 013-27451 | Anti CTGF Module4, Monoclonal Antibody | 4-69 | Human, Mouse | Neu | 10µL | 10,000 | 6,000 |
| | 019-27453 | | Mouse | IgG1 | | 50µL | 45,000 | 27,000 |
| FGF9 | 018-27381 | Anti Human FGF9, Monoclonal Antibody | GAF150-59 | Human | Neu, ELISA | 10µL | 10,000 | 6,000 |
| | 014-27383 | | Mouse | IgG1 | | 50µL | 35,000 | 21,000 |
| Fibrin | 010-27221 | Anti Fibrin, Monoclonal Antibody | FIB1-11 | Human, Rabbit, Baboon | Neu, ELISA | 10µL | 10,000 | 6,000 |
| | 016-27223 | | Mouse | IgG1 | | 50µL | 35,000 | 21,000 |
| Galectin-9 | 012-26061 | Anti Mouse Galectin-9, Rat Monoclonal Antibody | 108A2 | Mouse | WB, IHC, FC, ELISA | 50µg | 21,000 | 12,600 |
| | | | Rat | IgG2a | | | | |
| Mortalin | 010-21621 | Anti Human Mortalin, Monoclonal Antibody | C3 | Human, Mouse, Rat, Monkey, Rabbit | WB, IHC, ICC | 100µg | 30,000 | 18,000 |
| | | | Mouse | IgG2b・k | | | | |
| Tenascin-C | 018-21781 | Anti Human Tenascin-C, Rat Monoclonal Antibody | 3-6C2 | Human, Mouse | IHC | 100µg | 54,000 | 32,400 |
| | | | Rat | IgG2a・k | | | | |

4. microRNA研究関連抗体

| 標的 | コードNo. | 製品名 | クローンNo. | 交差性 | アプリケーション | 容量 | 希望納入価格 (円) | キャンペーン価格 (円) |
|--------------|-----------|--|---------|---------------------|----------|-------|---------------|-----------------|
| | | | 免疫動物 | アイソタイプ | | | | |
| Ago1 | 015-22411 | Anti Ago1, Monoclonal Antibody | 2A7 | Human, Mouse | IP | 50µL | 30,000 | 18,000 |
| | | | Mouse | IgG2a・k | | | | |
| Ago1 | 018-22401 | Anti Ago1, Monoclonal Antibody | 1F2 | Human, Mouse | WB | 50µL | 30,000 | 18,000 |
| | | | Mouse | IgG2a・k | | | | |
| Ago2 | 014-22023 | Anti Mouse Ago2, Monoclonal Antibody | 2D4 | Mouse, Rat, Hamster | WB, IP | 50µL | 30,000 | 18,000 |
| | 018-22021 | | Mouse | IgG1 | | 100µL | 50,000 | 30,000 |
| Ago3 | 016-25501 | Anti Mouse Ago3, Monoclonal Antibody | mA3-S9 | Mouse | IP | 50µL | 30,000 | 18,000 |
| | | | Mouse | IgG1 | | | | |
| Ago3 | 013-25491 | Anti Mouse Ago3, Monoclonal Antibody | mA3-S11 | Mouse | WB | 50µL | 30,000 | 18,000 |
| | | | Mouse | IgG1 | | | | |
| Ago4 | 012-24741 | Anti Ago4, Monoclonal Antibody | 2B2 | Human, Mouse | WB | 50µL | 30,000 | 18,000 |
| | | | Mouse | IgG1 | | | | |
| Ago4 | 019-24751 | Anti Ago4, Monoclonal Antibody | 2G7 | Human, Mouse | IP | 50µL | 30,000 | 18,000 |
| | | | Mouse | IgG2b | | | | |
| Ago1-4 | 012-25581 | Anti Ago1-4, Monoclonal Antibody | 1G3 | Human, Mouse | WB, IP | 200µL | 40,000 | 24,000 |
| | | | Mouse | IgG1 | | | | |
| PIWIL1 | 017-23451 | Anti PIWIL1, Monoclonal Antibody | 2C12 | Human, Mouse | IP | 100µL | 30,000 | 18,000 |
| | | | Mouse | IgG3・k | | | | |
| PIWIL1/MARWI | 014-26641 | Anti PIWIL1/MARWI, Monoclonal Antibody | 1A5 | Mouse, Marmoset | WB, IP | 50µL | 40,000 | 24,000 |
| | | | Mouse | IgG1 | | | | |
| PIWIL1/MARWI | 011-26651 | Anti PIWIL1/MARWI, Monoclonal Antibody | 2D9 | Marmoset | IHC | 50µL | 40,000 | 24,000 |
| | | | Mouse | IgG1 | | | | |

5. その他

| 標的 | コードNo. | 製品名 | クローンNo. | 交差性 | アプリケーション | 容量 | 希望納入価格 (円) | キャンペーン価格 (円) |
|-------------|-----------|-------------------------------------|---------|--------|----------|-------|---------------|-----------------|
| | | | 免疫動物 | アイソタイプ | | | | |
| IgG2a (Rat) | 016-26101 | Anti Rat IgG2a, Monoclonal Antibody | RG002 | Rat | ELISA | 100µL | 24,000 | 14,400 |
| | | | Mouse | IgG1 | | | | |

- 本キャンペーンは和光純薬工業の代理店・特約店から購入した場合のみ適用されます。
- 本文に記載しております試薬は、試験・研究用のみ使用されるもので、「医薬品」、「食品」、「生活用品」などとして使用できません。
- 希望納入価格には消費税等が含まれておりません。
- 希望納入価格は予告なく変更する場合がございますがご了承下さい。
- 最新の保存条件・法規情報はSiyaku.com(<https://www.siyaku.com/>)をご確認ください。

和光純薬工業株式会社

本社: 〒540-8605 大阪市中央区道修町三丁目1番2号
 東京本店: 〒103-0023 東京都中央区日本橋本町二丁目4番1号

- 九州営業所 TEL: 092-622-1005
- 中国営業所 TEL: 082-569-8095
- 東海営業所 TEL: 052-772-0788
- 藤沢営業所 TEL: 0466-29-0351
- 筑波営業所 TEL: 029-858-2278
- 東北営業所 TEL: 022-222-3072
- 北海道営業所 TEL: 011-271-0285

フリーダイヤル: 0120-052-099 フリーファックス: 0120-052-806

- Wako Chemicals USA, Inc.
<http://www.wakousa.com>
 E-mail: labchem@wakousa.com
- Wako Chemicals GmbH (Europe Office)
<http://www.wako-chemicals.de>
 E-mail: labchem@wako-chemicals.de